

The Aesthetic Zone

🕒 September 2, 2019

🖨 Dr Nicholas Hocking (<https://nwhocking.com/author/nicknwhocking-com/>)

📁 Aesthetic Zone (<https://nwhocking.com/category/aesthetic-zone/>)



Below is a typical example of a young female with agenesis of her maxillary (upper) lateral incisors. This means they did not develop from birth.

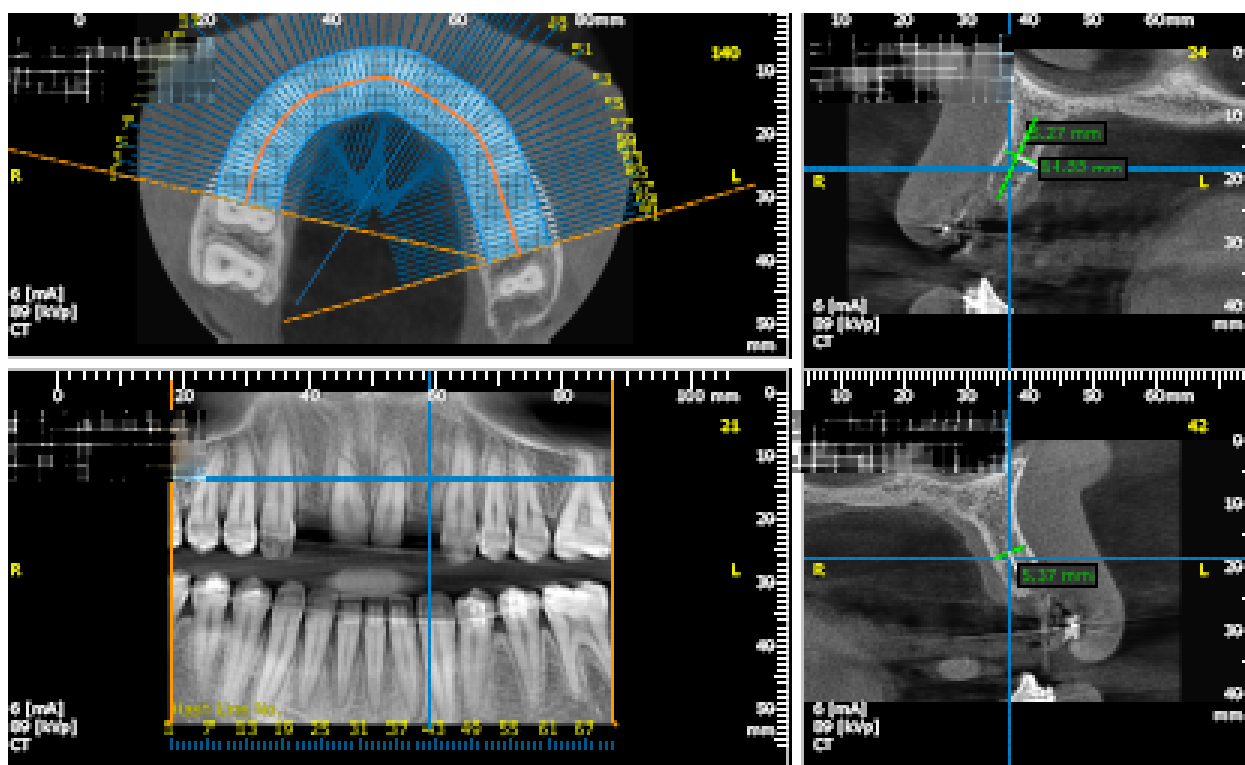
Diagnostic Pre-Treatment Images



(<http://nwhocking.com/wp-content/uploads/2019/09/1-1024x573.jpg>)



(<http://nwhocking.com/wp-content/uploads/2019/09/2-1024x559.jpg>)



(<http://nwhocking.com/wp-content/uploads/2019/09/3-1.png>)

Treatment Images

Two Bioconcept bone level RC 3.3mm implants were then carefully placed using a surgical guide to ensure ideal placement in this con ned space. Several intra-operative check x-rays were taken with depth gauges in place.



(<http://nwhocking.com/wp-content/uploads/2019/09/3a-771x1024.jpg>)

(<http://nwhocking.com/wp-content/uploads/2019/09/3b-710x1024.jpg>)

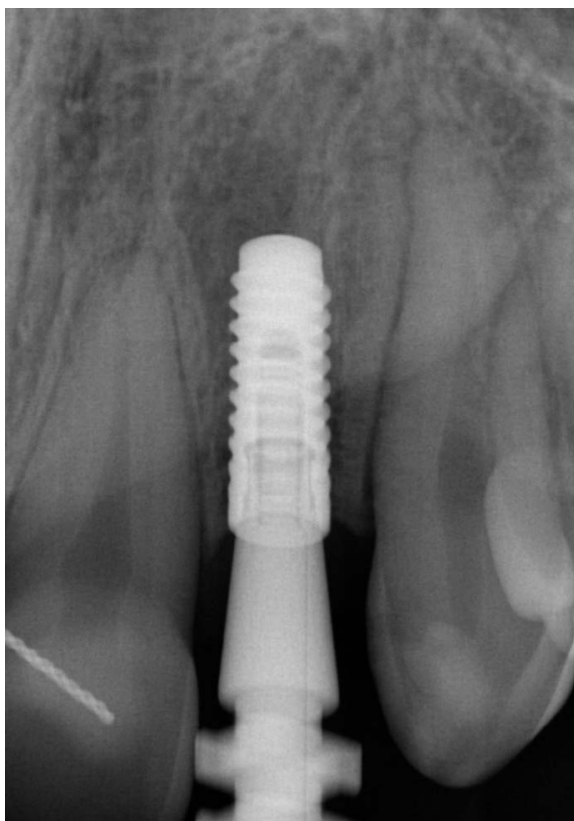


Successful osseointegration was confirmed with radiographs, and an ISQ (Ostell) reading of greater than 64.

The definitive impression is now taken. Impression copings are placed and a check radiograph is taken to confirm complete seating.

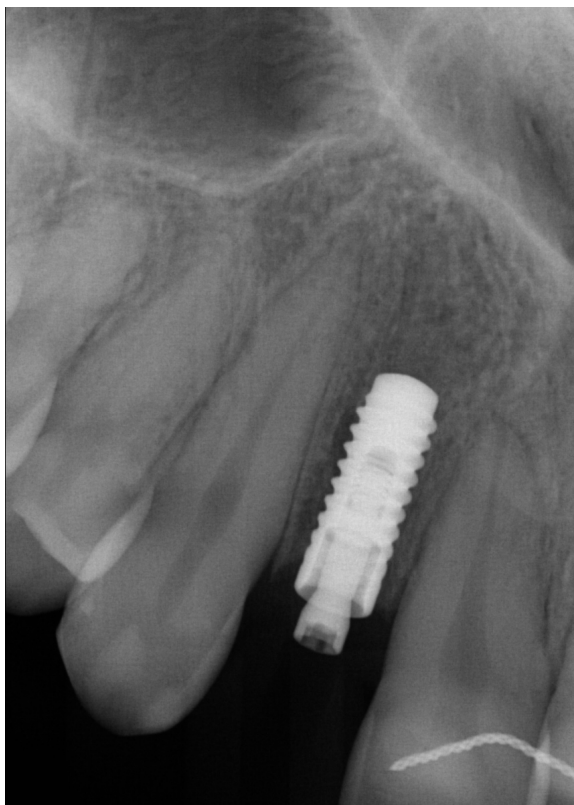


(<http://nwhocking.com/wp-content/uploads/2019/09/7-1024x687.jpg>)



(<http://nwhocking.com/wp-content/uploads/2019/09/4.jpg>)

Initially provisional restorations were constructed. This is to confirm the ideal emergence profile and to support complete healing of the interproximal papillae.



(<http://nwhocking.com/wp-content/uploads/2019/09/9-1024x687.jpg>)

(<http://nwhocking.com/wp-content/uploads/2019/09/10-723x1024.jpg>)

Review



(<http://nwhocking.com/wp-content/uploads/2019/09/12-1024x489.jpg>)



(<http://nwhocking.com/wp-content/uploads/2019/09/11-721x1024.jpg>)

Following two months with provisional restoration in place, aesthetics were deemed to be ideal.

Impression copings were then customised to capture the emergence profile which had been established, and definitive impressions were taken. Veneered zirconia crowns were then luted onto Variobase abutments in the lab, and the restorations were then inserted, and abutment screws torqued to 35 Ncm.

Tags:

[< PREVIOUS \(HTTPS://NWHOCKING.COM/CASE-1/\)](https://nwhocking.com/case-1/)

NEXT >

Case Types

Aesthetic Zone (<https://nwhocking.com/category/aesthetic-zone/>) (1)

Cases Requiring Grafting (<https://nwhocking.com/category/requiring-grafting/>) (2)

Immediate Placement (<https://nwhocking.com/category/immediate-placement/>) (1)

Multiple Units (<https://nwhocking.com/category/multiple-units/>) (2)

Dr Nicholas W. Hocking - 2019

Privacy Policy (<https://nwhocking.com/privacy-policy/>)